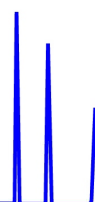




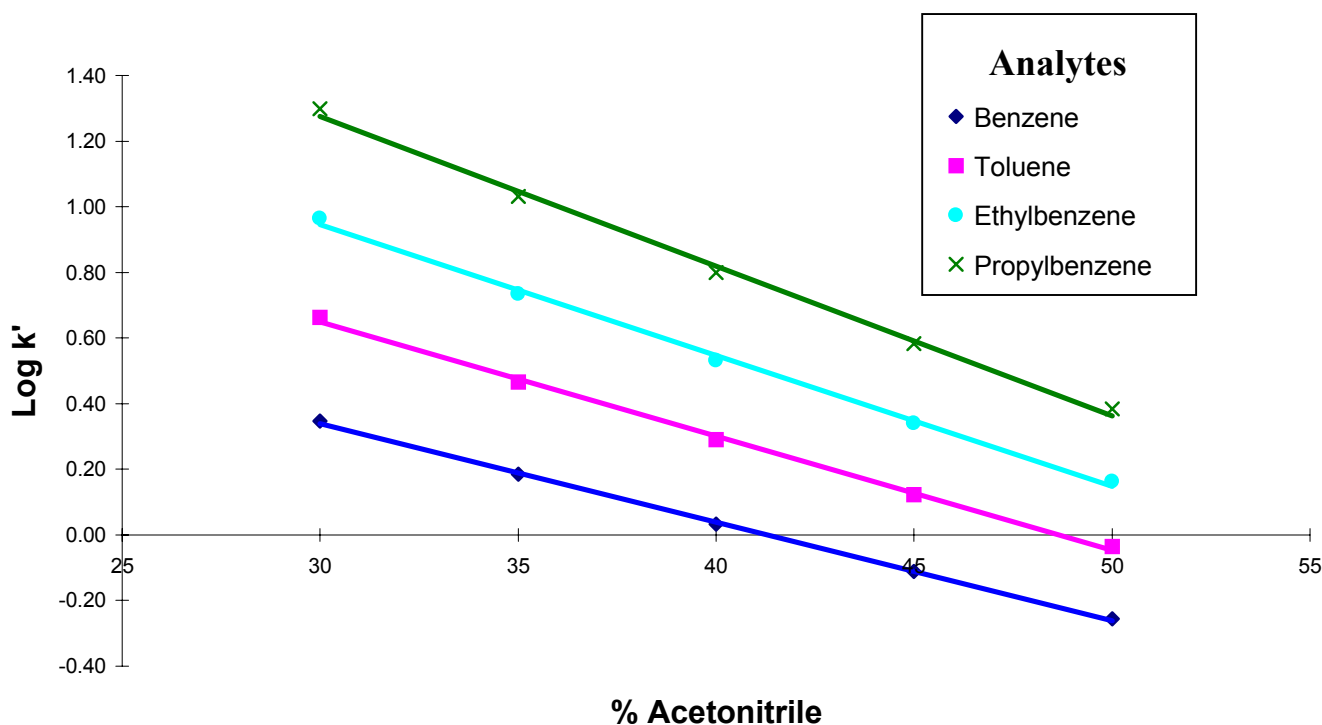
ZirChrom®

Technical
Bulletin #133



... For Peak Performance

Reversed-Phase Retention Behavior of ZirChrom®-PBD



LC Conditions

Column: ZirChrom®-PBD, 150 × 4.6 mm

Mobile Phase: A/B

A: Acetonitrile

B: Water

Flow rate: 1.0 mL/min.

Temperature: 30 °C

Detection: 280 nm

