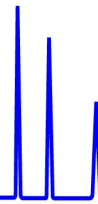


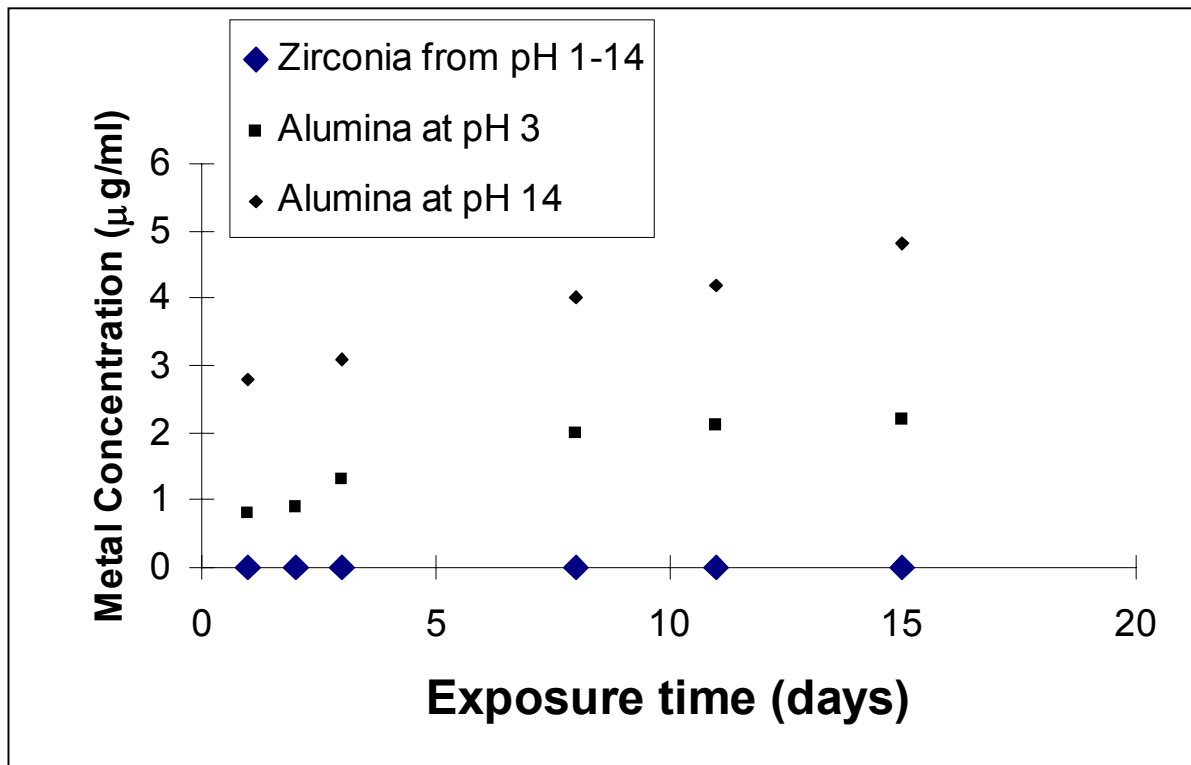


ZirChrom®

 Technical  
 Bulletin #109


... For Peak Performance

## ZirChrom® - Zirconia Substrate Shows Extreme Chemical Stability Over the Entire pH Range\*



- Zirconia showed no detectable dissolution over the entire pH range by ICP analysis.
- Alumina was significantly soluble at pH 3 and 14.
- Silica was so soluble at pH 3 and 14 that the data points are off the chart.
- ZirChrom® -PBD, ZirChrom® -PHASE and ZirChrom® -CARB, and Diamondbond® -C18 columns are all stable over an extended pH range.

\* reference: M.P. Rigney, E.F. Funkenbusch and P.W. Carr, J. Chromatogr., 499 (1990) 291.

